

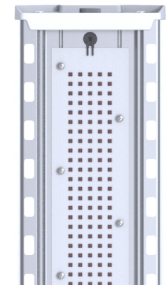
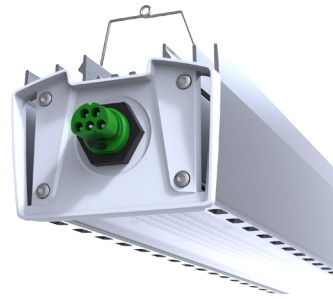
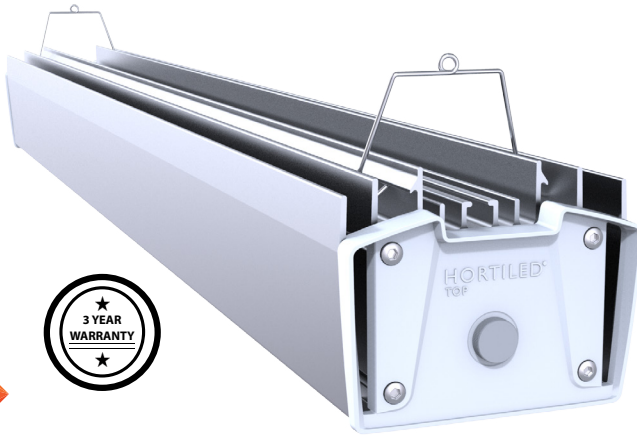


P.L. LIGHT SYSTEMS

THE LIGHTING KNOWLEDGE COMPANY

T: 905.563.4133
 Toll Free: 1.800.263.0213
 F: 905.563.0445
 www.plight.com

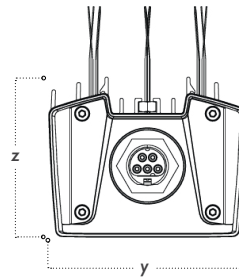
FIXTURE	HortiLED TOP
Project	
Notes	



TECHNICAL SPECIFICATIONS [†]							
Rated Main Voltage	120V	208V	240V	277V	347V	400V	480V
Amperage (max)	2.67A	1.54A	1.33A	1.16A	0.92A	0.80A	0.67A
Power	320W						
Light Source	LED						
System Efficacy (R-LB)	2.7 μmol/J						
Flux (R-LB)	860 μmol/m ² .s						
Power Factor	>0.98						
Input Frequency	50/60Hz						
Lifetime	25,000 hrs [‡]						

[†]Accurate to ± 10%

[‡]Photon Flux maintenance of 90% @ max. ambient operating temperature of 40°C



DIMENSIONS	
x = length	38.039 in. (966.2 mm)
y = width	4.681 in. (118.9 mm)
z = height	3.740 in. (95.0 mm)
weight	15.21 lb. (6.90 kg)



SPECIFICATION					
1. FIXTURE	2. DISTRIBUTION	3. VOLTAGE	4. CORD / PLUG	5. COLOUR SPECTRA	6. DIMMING
HortiLED TOP (Integrated Driver)	80° Distribution Angle 150° Distribution Angle	120 – 277V 200 – 480V	Cord w/Wieland Connector	Red/Blue (LB/MB/HB) Red/White (LB/MB) Full Spectrum Custom	None 0 – 10V Dimming

Warranty Terms: Warranty shall be granted provided that the light output of the complete fixture has diminished by more than 10% of the specified light output within three (3) years.